

ORIGINAL

SHEET 1 OF 4 SHEETS

TRACT NO. 4472

IN UNINCORPORATED TERRITORY OF ORANGE COUNTY, CALIFORNIA
BEING A SUBDIVISION OF A PORTION OF THE RANCHO NIGUEL, AS SHOWN ON A MAP RECORDED
JUNE 30, 1877 IN BOOK 2, PAGES 230 AND 231 OF PATENTS, RECORDS OF LOS ANGELES
COUNTY, CALIFORNIA, AND A PORTION OF SALT CREEK ROAD, AS VACATED BY THE
BOARD OF SUPERVISORS RECORDED IN BOOK 5480 PAGE 22 AND BOOK 5635 PAGE 847
OFFICIAL RECORDS, RECORDS OF ORANGE COUNTY, CALIFORNIA.

44 LOTS

FRANK W. RICHARDSON, L.S. 2921
FEBRUARY, 1962

11.360 ACRES

INDEXED 10007

ORANGE COUNTY RECORDS
RUBY McFARLAND, County Recorder
Fee.....\$11.00.....

We, the undersigned, being all parties having any record title interest in the land covered by this map, do hereby consent to the preparation and recordation of said map as shown within the blue colored border line, and we hereby offer for dedication:

ALL VEHICULAR ACCESS RIGHTS TO PACIFIC COAST HIGHWAY TO THE COUNTY OF ORANGE.
WE HEREBY DO NOT OFFER FOR DEDICATION LOTS "A" THROUGH "G" INCLUSIVE, FOR PUBLIC USE FOR HIGHWAY PURPOSES, SUCH LOTS BEING INTENDED FOR THE EXCLUSIVE USE OF THE LOT OWNERS IN THIS SUBDIVISION, THEIR LICENSEES, VISITORS, TENANTS AND SERVANTS.
LNC CONSTRUCTION COMPANY, A CORPORATION, SUBLESSEE AND DEVELOPER

I, Frank W. Richardson, hereby certify that I am a Licensed Surveyor No. 2921, of the State of California, and that this map consisting of 4 sheets correctly represents a true and complete survey made under my direction January, 1962; that the monuments are of the character and occupy the positions indicated or will be set in such positions within one year from the recording date of this map, and that said monuments are sufficient to enable the survey to be retraced.

Frank W. Richardson
Licensed Surveyor No. 2921

I, Allen S. Koch, County Surveyor of Orange County, California, do hereby certify that I have examined this map and have found it to be substantially the same as the tentative map as filed, amended and approved by the Orange County Planning Commission; that all provisions of the Subdivision Map Act and County Subdivision Regulations have been complied with, and I am satisfied said map is technically correct.

Dated this 4th day of December 1963

ALLEN S. KOCH
County Surveyor

By: Robert V. Wise
Deputy

FIRST WESTERN BANK AND TRUST COMPANY, a corporation, record owner.

Allen F. Schmeltz James Gillogly
VICE PRES AND TRUST OFFICER ASSISTANT SECRETARY

LAGUNA NIGUEL CORPORATION, a corporation, lessee under lease recorded July 1, 1960 in Book 5311 Page 44, Official Records.

Ivar O. Hanson J.E. Shrader
IVAR O. HANSON, VICE PRES. J.E. SHRADER ASST. SEC.

State of California)
County of Orange) ss.

I, W.E. St John County Clerk of Orange County, do hereby certify to the County Recorder of Orange County that the provisions of the Subdivision Map Act have been complied with regarding deposits to secure payments of taxes and special assessments on the land covered by this map.

Dated this 10 day of Dec 1963

W.E. ST JOHN
County Clerk of Orange County

By: Wayne A. Drager
Deputy

State of California)
County of ORANGE) ss.

On this 14th day of JUNE 1962, before me ROBERTA M. LOHRMAN a Notary Public in and for said County and State, personally appeared ALLEN F. SCHMELTZ known to me to be VICE PRES AND TRUST OFFICER and FRANCES GILLOGLY known to me to be ASSISTANT SECRETARY of First Western Bank and Trust Company, a corporation, the corporation that executed the within instrument, and known to me to be the persons that executed the within instrument on behalf of the corporation therein named, and acknowledged to me that such corporation executed the same.

My commission expires: Dec. 13, 1962

Roberta M. Lohrman
Notary Public in and for said County and State

State of California)
County of ORANGE) ss.

On this 14th day of June 1962, before me Patricia P. Dunagan a Notary Public in and for said County and State, personally appeared Ivar O. Hanson, known to me to be Vice President and J.E. SHRADER, known to me to be Ass. Secretary of Laguna Niguel Corporation, a corporation, the corporation that executed the within instrument, and known to me to be the persons that executed the within instrument on behalf of the corporation therein named, and acknowledged to me that such corporation executed the same.

My commission expires: June 26, 1965

Patricia P. Dunagan
Notary Public in and for said County and State.

State of California)
County of Orange) ss.

I, W.E. ST JOHN County Clerk and Ex Officio Clerk of the Board of Supervisors of Orange County, do hereby certify that this map was presented for approval to the Board of Supervisors of the said County of Orange at a regular meeting thereof held on the 10 day of Dec 1963, and that thereupon said Board did by an order duly passed and entered, approve said map and did accept on behalf of the public the offer of dedication of

ALL VEHICULAR ACCESS RIGHTS TO PACIFIC COAST HIGHWAY AS DEDICATED.

Dated this 10 day of Dec 1963

W.E. ST JOHN
County Clerk and Ex Officio Clerk of the Board of Supervisors.

By: Wayne A. Drager
Deputy

State of California)
County of Orange) ss.

I, Don S. Mozley, County Tax Collector and Redemption Officer of said County of Orange, do hereby certify that according to the records of my office, there are no liens against the land shown on this map or any part thereof for unpaid State or County taxes or special assessments collected as taxes.

Dated this 27th day of November 1963

DON S. MOZLEY
County Tax Collector and Redemption Officer of Orange County.

By: W. E. Markle
Deputy

SIGNATURE OMISSIONS:

Pursuant to the provisions of Section 11587 of the Business and Professions Code, the following signatures have been omitted:

- San Diego Consolidated Gas and Electric Company, holder of easements recorded August 12, 1926 in Book 666, Page 316 of Deeds and November 5, 1930, in Book 436 Page 58 of Official Records.
- State of California, holder of an easement recorded August 29, 1930, in Book 416 Page 50, of Official Records.
- First Western Bank & Trust Company successors to First National Bank in Santa Ana holder of an easement recorded November 2, 1951, in Book 2449 Page 286 of Official Records.
- San Diego Gas & Electric Company, a corporation, holder of easements recorded February 1, 1961, in Book 5615 Page 28, Official Records; February 27, 1961 in Book 5640 Page 354 Official Records; June 1, 1961 in Book 5741 Page 113 Official Records and June 1, 1961 in Book 5741 Page 111, Official Records.
- South Laguna Sanitary District, holder of an easement recorded September 29, 1961, in Book 5865 Page 568 of Official Records.

State of California)
County of Orange) s.s.

On this 14 day of NOV., 1963, before me Patricia P. Dunagan a Notary Public in and for said County and State, personally appeared W. H. Beck, known to me to be Vice President and W. R. Nichols, known to me to be Secretary of LNC Construction Company, a corporation, the corporation that executed the within instrument, and known to me to be the persons that executed the within instrument on behalf of the corporation therein named, and acknowledged to me that such corporation executed the same.

My commission expires: June 26 1965

Patricia P. Dunagan
Notary Public in and for said County and State

SCALE 1" = 40'

ORIGINAL TRACT NO. 4472

IN UNINCORPORATED TERRITORY OF ORANGE COUNTY, CALIFORNIA
44 LOTS FRANK W. RICHARDSON L.S. 2921 ACRES 11.360
FEBRUARY, 1962

INDEXED 10667

ACCEPTED AND FILED

DEC. 12 1963 AT 9 A.M.

AT REQUEST OF
TITLE INS. & TRUST CO.

ORANGE COUNTY RECORDS

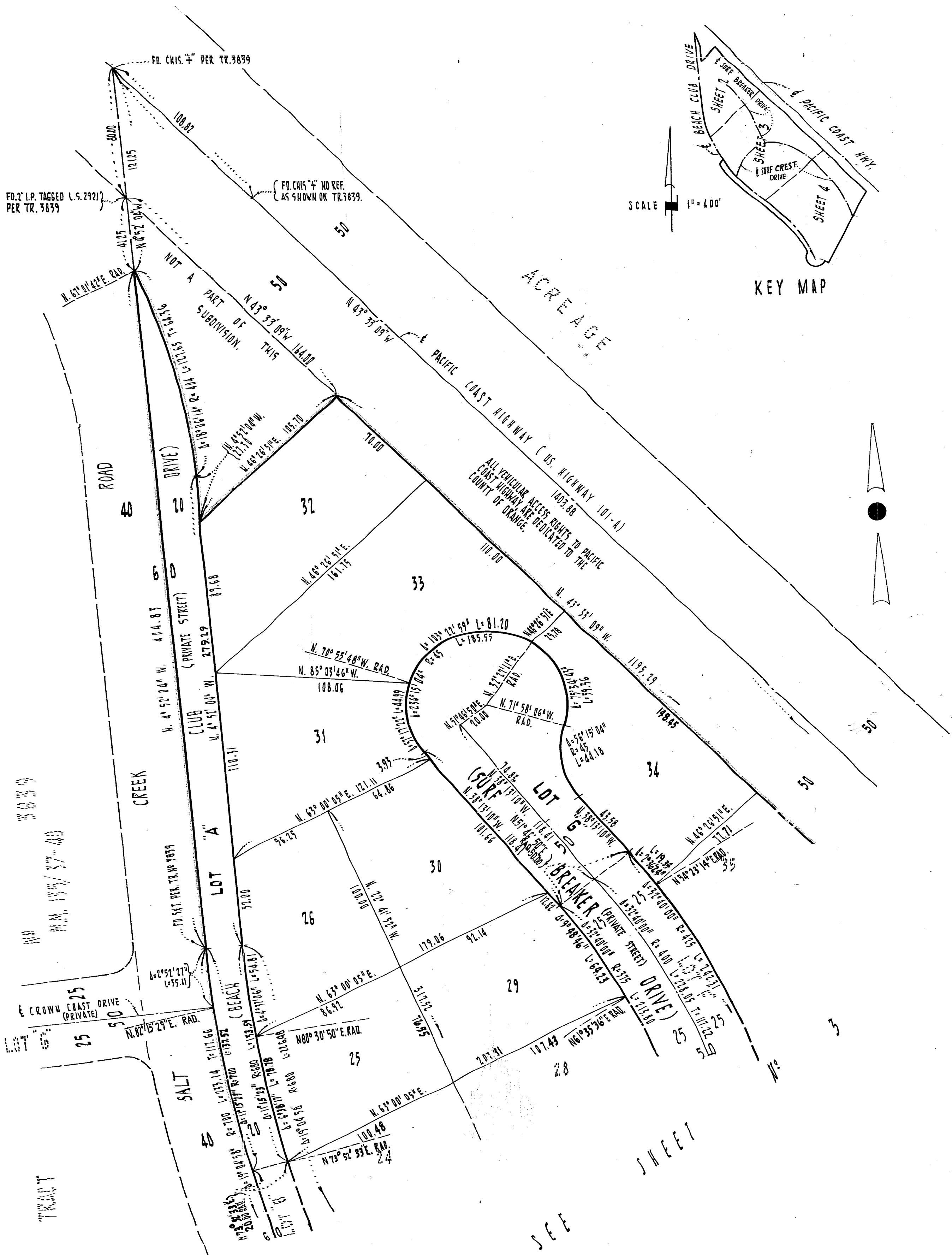
RUBY McFARLAND, County Recorder

Fee.....\$1,100

Basis of Bearings:
N. 4° 52' 04" W. FOR THE E. OF SALT CREEK ROAD
AS SHOWN ON TR. 3839.

Monument Notes:

- 1-SET 2" I.P. TAGGED L.S. 2921 6" BELOW SURFACE AT ALL TRACT CORNERS, UNLESS OTHERWISE NOTED.
- 2-SET 3/8" I.P. TAGGED L.S. 2921 AT ALL LOT CORNERS, UNLESS OTHERWISE NOTED.
- 3-SET 2" I.P. TAGGED L.S. 2921 IN SUBGRADE 4" BELOW SURFACE AND 9" T. ON SURFACE AT ALL INTERSECTIONS OF STREET CENTERLINE, AT BEGINNING AND END OF CURVES OF STREET CENTERLINES, AT TERMINATIONS OF STREET CENTERLINES, AND ALL OTHER POINTS OF CONTROL OF STREET CENTERLINES, UNLESS OTHERWISE NOTED.
- 4-TIES TO CENTERLINE MONUMENTS WILL BE MADE AND A COPY OF SAID TIES WILL BE FURNISHED TO THE COUNTY SURVEYOR.



SCALE 1" = 40'

ORIGINAL TRACT NO. 4472

SHEET 3 OF 4 SHEETS

IN UNINCORPORATED TERRITORY OF ORANGE COUNTY, CALIFORNIA

44 LOTS

FRANK W. RICHARDSON L.S. 2921

ACRES 11.360

FEBRUARY, 1962

NOTE:
FOR BASIS OF BEARINGS AND MONUMENT
NOTES SEE SHEET N92

INDEXED 10667

ACCEPTED AND FILED
DEC 12 1962 AT 9 A.M.

AT REQUEST OF
TITLE INS. & TRUST CO.

ORANGE COUNTY RECORDS

RUBY McFARLAND, County Recorder

Fee \$11.00

