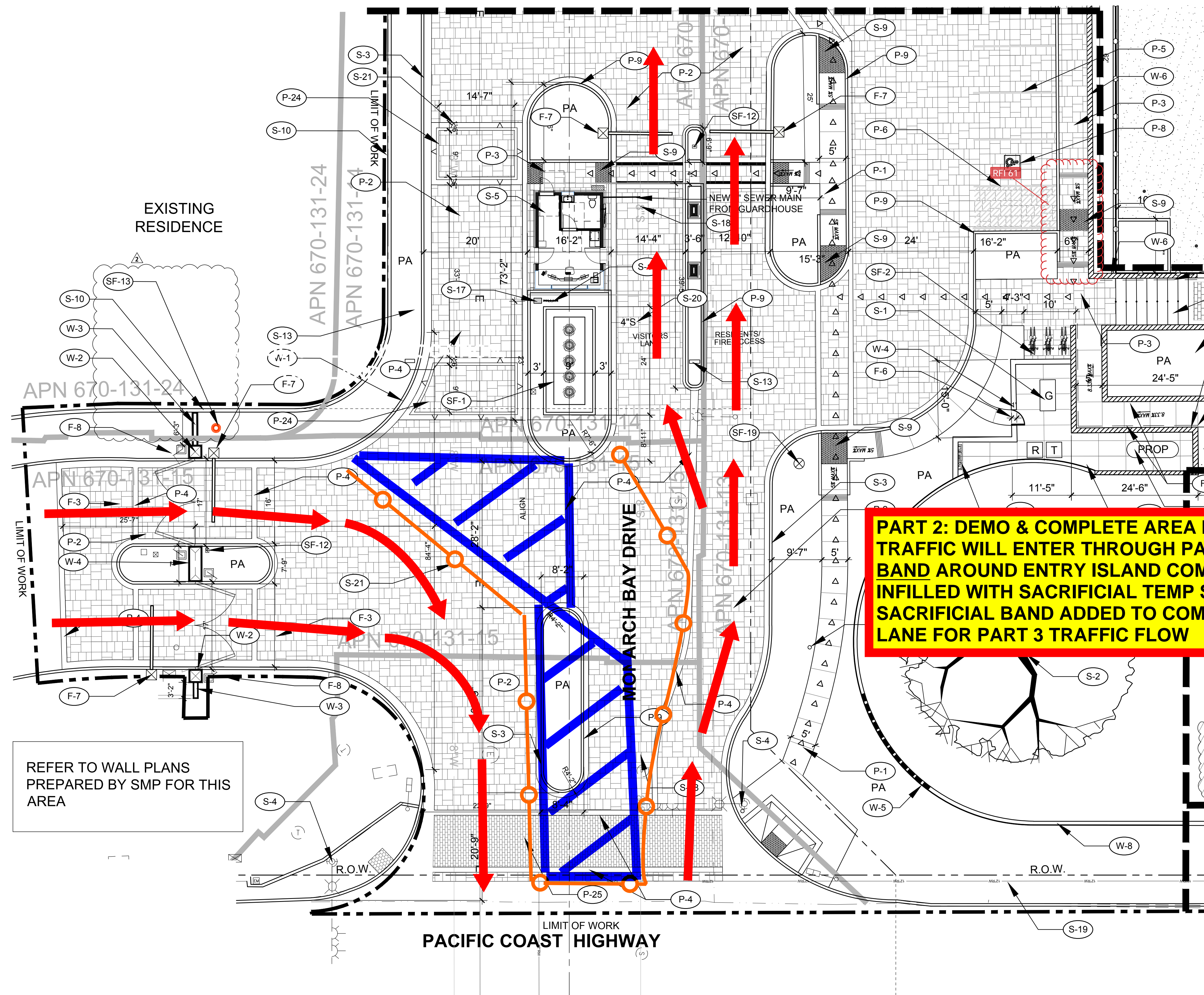


MATCHLINE: SEE SHEET CL-2



**PART 2: DEMO & COMPLETE AREA IN BLUE, TRAFFIC WILL ENTER THROUGH PART 1 AREA, BAND AROUND ENTRY ISLAND COMPLETE & INFILLED WITH SACRIFICIAL TEMP SLAB, SACRIFICIAL BAND ADDED TO COMPLETE EXIT LANE FOR PART 3 TRAFFIC FLOW**

REFER TO WALL PLANS PREPARED BY SMP FOR THIS AREA

**SITE KEYNOTES**

KEY	DESCRIPTION	DETAIL
S-1	EMERGENCY GENERATOR - BY OTHERS	-
S-2	EXISTING SPECIMEN FIGUS TREE TO REMAIN. PROTECT IN PLACE	-
S-3	CONCRETE CURB AND GUTTER	-
S-4	EXISTING STREET LIGHT / TRAFFIC POLE	-
S-5	GUARDHOUSE STRUCTURE - BY ARCHITECT	-
S-6	EXISTING FLAG POLE TO REMAIN	-
S-7	EXISTING ELEC PANEL, IRRIGATION & LIGHTING CONTROLLERS TO REMAIN IN THIS LOCATION. UPDATE AS NECESSARY	-
S-8	NOT USED	-
S-9	TACTILE WARNING MAT - PER CIVIL ENGINEER	-
S-10	EXISTING MASONRY BLOCK WALL TO REMAIN	-
S-11	AREA DRAIN - PER CIVIL ENGINEER	-
S-12	EXISTING WOOD FENCE TO REMAIN	-
S-13	SECONDARY DIRECTIONAL SIGNAGE	3CD-2
S-14	EXISTING TRAFFIC SPIKES TO BE REMOVED	-
S-15	PROPOSED 500 GALLON PROPANE TANK BY OTHERS	-
S-16	EXISTING BACKFLOW PREVENTER TO BE RELOCATED HERE	-
S-17	EXISTING 1" POTABLE WATER METER TO BE REMAIN IN THIS LOCATION	-
S-18	EXIST. 8" VCP SEWER MAIN. TIE NEW 4" VCP SWR INTO 8" VCP. SEE SCWD STD. DETAIL S-14 ON SHT. TS-3 FOR CONNECTION	-
S-19	EXIST. 12" RECLAIMED WATER MAIN TO REMAIN. PROTECT IN PLACE	-
S-20	EXISTING 4" VCP SEWER LATERAL TO BE REMOVED. CUT AND CAP OR PLUG LATERAL AT WYE	-
S-21	EXIST. 8" POTABLE WATER MAIN TO REMAIN. PROTECT IN PLACE	-

**PAVING / EDGING SCHEDULE**

KEY	DESCRIPTION	DETAIL
P-1	CONCRETE PAVING	4CD-3
P-2	8 CM CONCRETE PAVERS (VEHICULAR)	1CD-3
P-3	6 CM CONCRETE PAVERS (PEDESTRIAN)	2CD-3
P-4	VEHICULAR CONCRETE BANDS	6CD-3
P-5	CONCRETE PAVER PARKING MARKERS (WHITE)	5CD-3
P-6	CONCRETE PAVER PARKING MARKERS (BLUE)	5CD-3
P-7	CRETE STEPS	7CD-3
P-8	CAST ADA PAVR LOGO	3CD-3
P-9	CRETE CURBS	6CD-3
P-10	CRETE CURB	6CD-3
P-11	CAUTION PAVR (RELOCATED)	2CD-3
P-12	NOT USED	-
P-13	RUBBERIZED PLAY SURFACE WITH 6" CONCRETE MOWCURB WITH DEEPEND FOOTING	2CD-3
P-14	SOD LAWN: MARATHON II FESCUE OR EQUAL BID ALTERNATE: SYNTHETIC TURF	3CD-3
P-15	DECOMPOSED GRANITE AT DOG PARK BID ALTERNATE: SYNTHETIC TURF	3CD-3
P-16	EXISTING BASKETBALL COURT SURFACE - TO BE REMOVED	-
P-17	PICKLEBALL/TENNIS COURT PAVING	1CD-3
P-18	TENNIS COURT PAVING	1CD-3
P-19	MULTI COURT COURT PAVING	1CD-3
P-20	WOOD MULCH	-
P-21	SPORT COURT LINES	1CD-3
P-22	6 CM CONCRETE PAVERS BAND (PEDESTRIAN)	2CD-3
P-23	6 CM CONCRETE PAVER FIELD (PEDESTRIAN)	2CD-3
P-24	TRAFFIC CALMING DEVICE - SPEED TABLE	5CD-3
P-25	BRICK PAVERS (PEDESTRIAN)	-

**WALL SCHEDULE**

KEY	DESCRIPTION	DETAIL
W-1	EXISTING MASONRY WALL TO REMAIN	-
W-2	STONE CLAD PILASTER	4CD-3
W-3	5' HEIGHT STONE CLAD FREESTANDING WALL	2CD-3
W-4	4' HEIGHT STONE CLAD FREESTANDING WALL AT GENERATOR	2CD-3
W-5	EXISTING RETAINING WALL WITH NEW STONE CLAD AND SIGNAGE	3CD-3
W-6	48" STONE CLAD RETAINING WALL (HEIGHT VARIES - REFER TO CIVIL ENGINEER'S PLANS)	1CD-3
W-7	STONE CLAD FREESTANDING WALL AT RAMP (HEIGHT VARIES)	1CD-2
W-8	EXISTING RETAINING WALL TO REMAIN WITH NEW STONE CLADDING AND PRECAST CAP	3CD-3
W-9	EXISTING RETAINING WALL TO REMAIN	-
W-10	4' HIGH TUBULAR STEEL GATE	4CD-3
W-11	TOT LOT DEEPEENED CUT OFF WALL	2CD-3
W-12	4' HIGH TUBULAR STEEL FENCE	3CD-3

**FENCE / RAILING SCHEDULE**

KEY	DESCRIPTION	DETAIL
F-1	TUBULAR STEEL STAIR RAIL	2CD-2
F-2	TUBULAR STEEL RAMP RAIL	1CD-2
F-3	17' VEHICULAR GATE	4CD-1
F-4	20' VEHICULAR GATE	3CD-1
F-5	PEDESTRIAN GATE	2CD-1
F-6	SERVICE GATE	1CD-1
F-7	SECURITY ARM (BARRIER MHTM MICRODRIVE)	-
F-8	GATE ARM BOX (MEGATRON 2000 PLUS)	-
F-9	10' CHAIN LINK FENCE	1CD-3
F-10	8' CHAIN LINK FENCE	1CD-3
F-11	6' CHAIN LINK FENCE	-
F-12	4' CHAIN LINK FENCE	-
F-13	6'-8" CHAIN LINK COURT GATE	2CD-3
F-14	6' DOG PARK GATE	3CD-3
F-15	EXISTING WOOD FENCE TO REMAIN	-

**SITE FEATURES**

KEY	DESCRIPTION	DETAIL
SF-1	HAWS DRINKING FOUNTAIN / BOTTLE FILLER	4CD-3
SF-2	EMERSON BIKE RACK (3)	4CD-2
SF-3	CONCRETE COUNTER	-
SF-4	VERTICAL VENEER	-
SF-5	EXISTING CONCRETE BENCH BACKLESS	-
SF-6	EXISTING BENCH WITH BACK	4CD-3
SF-7	POE LITTER RECEPTACLE	7CD-3
SF-8	SURFACE MOUNTED KNOX KEY BOX	2CD-3
SF-9	EXISTING TOT LOT PLAY EQUIPMENT TO REMAIN - ADD 2 SHAPE TO PREP	1CD-3
SF-10	PICKLEBALL NET & POSTS	1CD-3
SF-11	TENNIS NET & POSTS	1CD-3
SF-12	GATE & DOOR ACCESS SYSTEM	-
SF-13	RFID READER	3CD-3
SF-14	NOT USED	-
SF-15	PICNIC TABLE	2CD-3
SF-16	TABLE WITH UMBRELLA	5CD-3
SF-17	EXISTING WATER FOUNTAIN (RELOCATED HERE)	4CD-3
SF-18	DOG WASTE RECEPTACLE RELOCATED ON SITE	-
SF-19	EXISTING WATER COOLER	-
SF-20	STREET LIGHT	5CD-3

ADA PATH OF TRAVEL. ALL NEW WALKS ON SITE ARE A MINIMUM OF 48" WIDE AND HAVE A 5% MAXIMUM RUNNING SLOPE WITH 2% MAXIMUM CROSS SLOPE (PER CBC 11B-402.2).

No.	Description	Sht.	Approved	Date
2	OCFA PLAN CHECK COMMENTS, ADDED 'ATTACHMENT 3'	CL-1, CL-2, CD-1, CD-8		08/26/21

**UNDERGROUND SERVICE ALERT**

CALL-TOLL FREE  
1-800-422-4133

TWO WORKING DAYS BEFORE YOU DIG

"CAUTION": REMEMBER THAT THE USA CENTER NOTIFIES ONLY THOSE UTILITIES BELONGING TO THE CENTER. THERE COULD BE OTHER UTILITIES PRESENT AT THE WORK SITE. THE CENTER WILL INFORM YOU OF WHOM THEY WILL NOTIFY.

PLANS PREPARED BY:

**SMP**  
ENVIRONMENTAL DESIGN  
SUMMERS/MURPHY & PARTNERS, INC.  
34197 COAST HWY SUITE 200  
DANA POINT CA 92629  
(949) 443-1446

REGISTERED LANDSCAPE ARCHITECT  
C.M. Murphy No. 1887  
Signature: 7-31-21  
Renewal Date: 8-31-20  
Date

CITY OF DANA POINT

**MONARCH BAY HOA**  
32857 PACIFIC COAST HIGHWAY  
GATED ENTRY & PARK PLANS  
CONSTRUCTION LAYOUT PLAN

DESIGNED SMP  
DRAWN DM  
CHECKED MM  
DATE 11-23-2020  
JOB NO. 742982

**CL-1**

CAD FILE NAME: 982\_MBE\_CL.dwg

7 OF 39 SHEETS

PERMIT # BLD21-0923